

State of Wyoming Corner Record

(In compliance with the **CORNER PERPETUATION AND FILING ACT**, Wyoming Statutes, 1997 Section 33-29-140 et. seq. and the Rules and Regulations of the Board of Professional Engineers and Professional Land Surveyors)

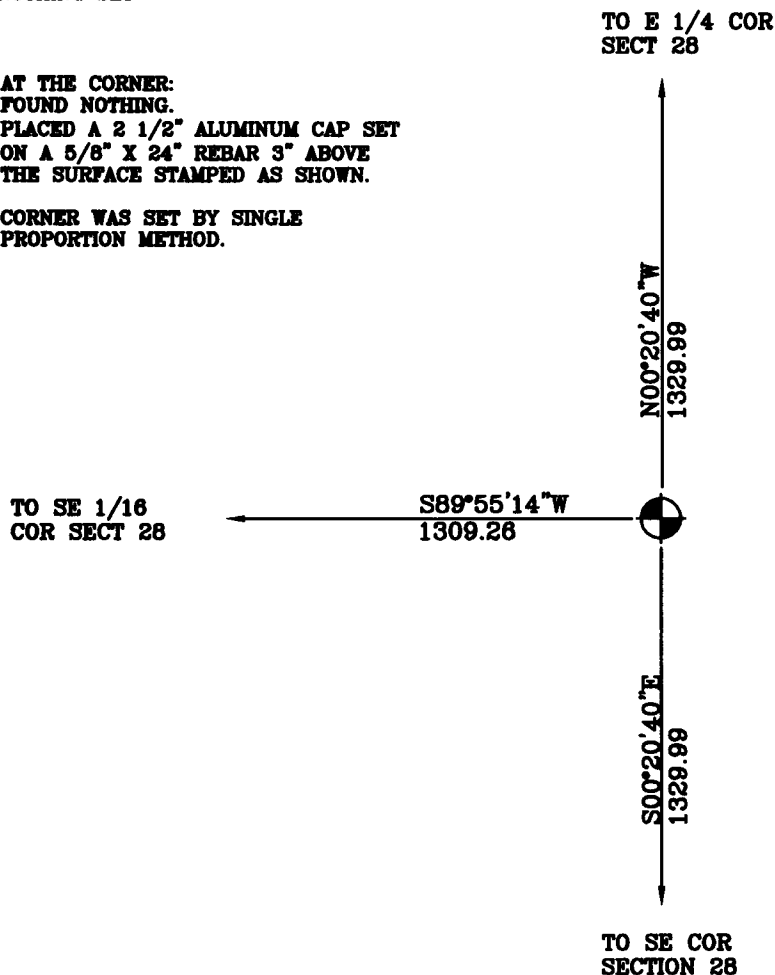
Reverse side of this form may be used if more space is needed.

Record of original survey and citation of source of historical information (if corner is lost or obliterated). Description of corner monumentation evidence found and/or monument and accessories established to perpetuate the location of this corner. Sketch of relative location of monument, accessories, and reference points with course and distance to adjacent corner(s) (if determined in this survey). Method and rationale for reestablishment of lost or obliterated corner.

G.L.O. RECORD:
NOTHING SET

AT THE CORNER:
FOUND NOTHING.
PLACED A 2 1/2" ALUMINUM CAP SET
ON A 5/8" X 24" REBAR 3" ABOVE
THE SURFACE STAMPED AS SHOWN.

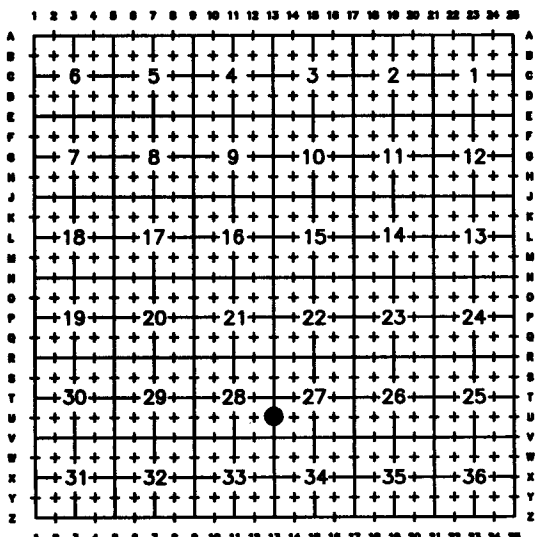
**CORNER WAS SET BY SINGLE
PROPORTION METHOD.**



Date of Field Work: 11/18/08

Office Reference: RABOU

Cross Index Plat



Firm/Agency, Address

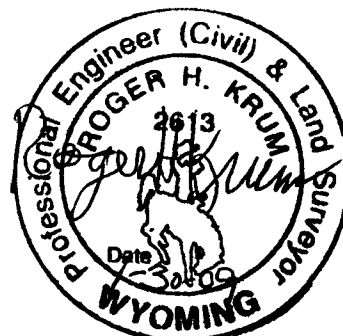
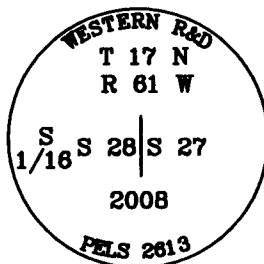
Western R&D, Ltd.
5809 Yellowstone Rd, Suite B
Cheyenne, Wyoming 82009

This corner record was prepared by me or under my direction and supervision.

SEAL & SIGNATURE

Telephone Number: (307) 632-5656

● Denotes Monument Set



Corner Name SOUTH 1/16 CORNER Sections 27 & 28, T 17 N, R 61 W, 6th P.M. Cross-Index No.: U-13

County: LARAMIE Wyoming

SBRPELS/PLSW: March 1994; PLSW January 1998

